

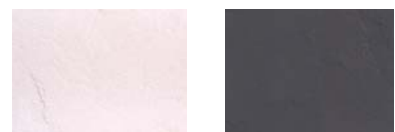


Product Sizes & Colours



BEIGE

ALPINE



SANDS

NERO

TERRAIN and SATIN PAVERS

400 x 400 x 40mm — [Nero
Sands
Beige
Alpine

BULLNOSE PAVERS AVAILABLE

Paver care

- Newstone Pavers will require some ongoing maintenance to keep them in a pristine condition.
- Dirt and dust should be hosed away off your Newstone Pavers whilst any weed growth should be sprayed and controlled. Use Interlock to minimise weed growth.
- Do not allow ants to nest in the Newstone Paver's base materials - this can affect the stability of the paving. Use Interlock to stop ants nesting.
- All pavers from time to time will require cleaning. Oil, rust, efflorescence and other stains can detract from your Newstone Paver's appearance.
- Amber has an extensive range of products for cleaning and sealing Newstone Pavers.



NEWSTONE

innovative
pavers

Newstone pavers proudly distributed exclusively by Amber. For your nearest store phone 1300 362 241 or visit www.ambertiles.com.au

The Finished Look

Terrain and Satin Finishes



Newstone hand-made pavers replicate the timeless elegance of natural stone, with rich natural colouring and textured finishes.

Beyond its natural appeal, Newstone is also highly durable and versatile. Uniform dimensions make the product easy to lay and matching bullnosed accessories make it a distinctive choice for pool surrounds, courtyards, steps, driveways and verandahs.

Newstone Terrain can be used with Amber's popular Epos Series interior tile to create a flow-through effect and extend the indoors out.

Enhance the natural appeal of Newstone and achieve a distinctive look with the introduction of water, pebble inlays or mosaic, timber or slate finishes.

Textured with fossilised imprints or an exquisite velveteen finish - with their array of colours Newstone Pavers allow you to extend your indoor living areas to the outdoors.

Your home can reflect your true sense of style with this superbly man made stone.



The Product Range

Newstone produces the highest quality paving products available. The large format range is available in 2 textures:

Terrain - textured fossilised surface

Satin - velveteen finish

And in a variety of colours:

Nero

Sands

Beige

Alpine

The product range includes bullnoses in the two finishes to ensure that every entertaining and poolside area can be completely integrated.

For first class outdoor areas, Newstone products provide the most exceptional finishes.



Inspiration Mix and match the Newstone paver colours to add style and creativity to your courtyard, verandah or pool surrounds. Use a Landscape Designer to assist maximising potential of area.